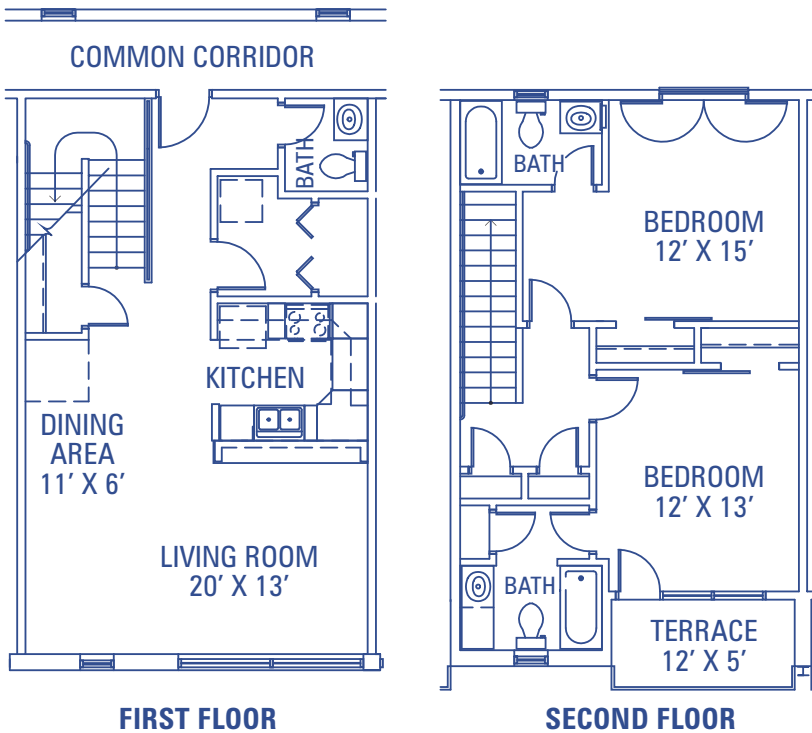


Morton 400



Smallwood's newest apartments are the biggest 2-bedroom townhouses in Bloomington. The Morton 400 townhouses are an exclusive cluster of five apartments perched atop trendy retail space.

The Morton 400's huge front windows on the main level and the upstairs outdoor terrace both overlook Bloomington's historic Showers Plaza. An open floor plan provides expansive living and dining areas with 14' ceilings above real cherry hardwood flooring. The generous open concept kitchen's cabinetry is maple and all the appliances are stainless steel. Each large bedroom has its own bathroom with ceramic tile flooring.

TOWNHOUSE APARTMENTS

2 BR / 2.5 BTHS - 1,223 - 1,363 SQ FT

Starting at \$1,899 per month, \$1,000 Security Deposit*

- Highest speed Internet in town
- Cable TV
- Free membership to Cardinal Fitness
- Washer & dryer in unit
- 24-hour emergency maintenance
- Secured access to building and parking garages
- Trash removal
- Onsite storage unit
- Real cherry hardwood flooring
- Stainless steel appliances
- Maple kitchen cabinetry
- Ceiling fans in all bedrooms and living rooms
- All just minutes from IU campus, shopping, entertainment, and city bus lines
- On campus bus lines

*Prices and promotions are subject to change.

Floor plans may vary.



400 NORTH MORTON

VISIT THE LEASING SPOT INSIDE SMALLWOOD
CALL 812.331.8500 OR GO ONLINE TO WWW.SMALLWOODPLAZA.COM